



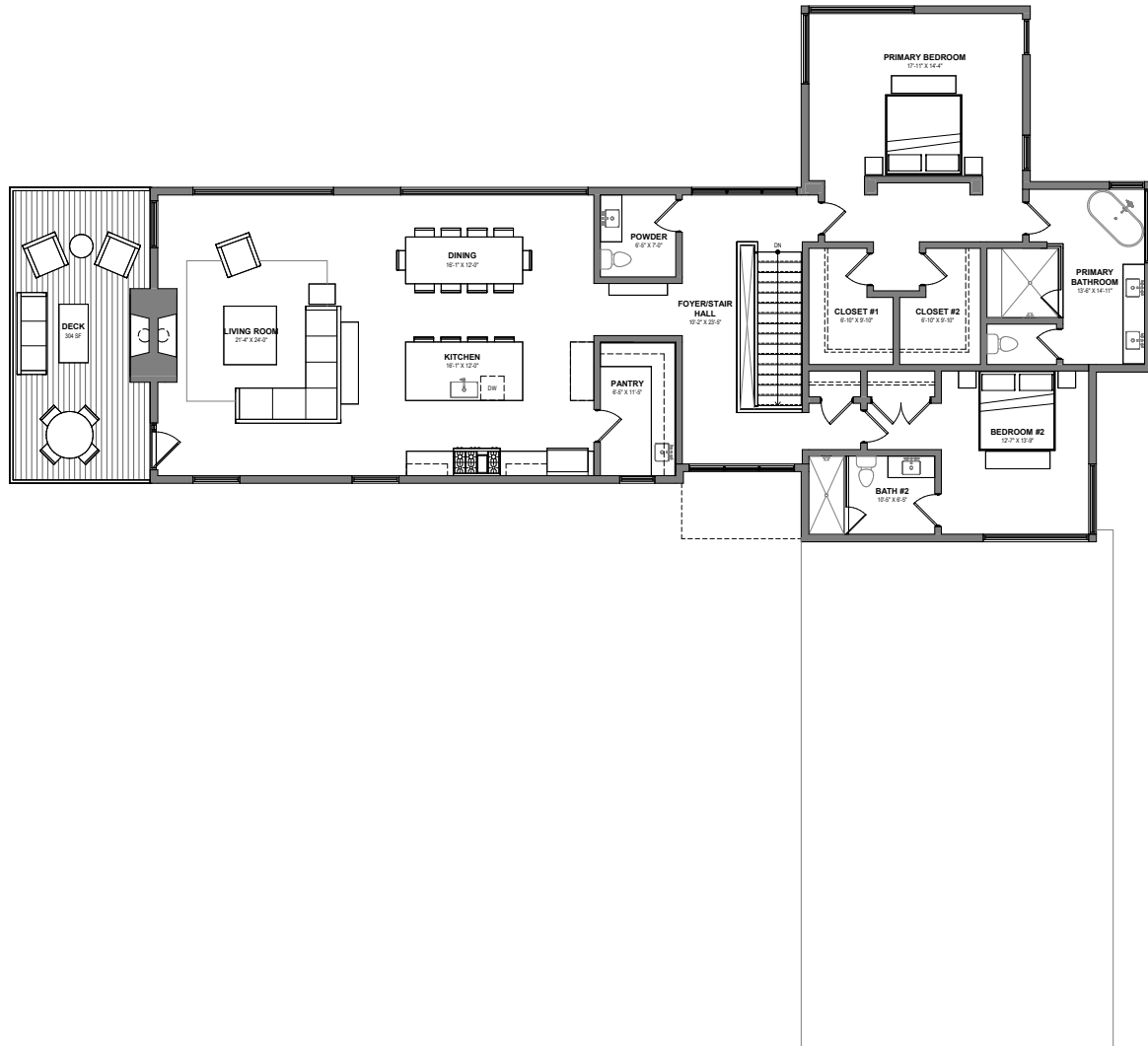
THE OVERLOOK
SUMMIT SKY RANCH

SPRUCE FLOOR PLAN

5 Bedrooms | 5 1/2 Bathrooms | 4,940 Total Square Feet



MAIN LEVEL



Total Square Feet: 4,940

3 Garage Spaces: 1,152 SF

LOWER LEVEL



Total Bedrooms: 5

Total Bathrooms: 5 1/2

SPRUCE FLOOR PLAN HIGHLIGHTS

- Thoughtful contemporary design with clean lines and second level open concept living space to capture stunning views and abundant natural light
- An emphasis on indoor-outdoor living with oversized windows, double sliding glass doors, outdoor fireplace off deck and lower level patio
- Welcoming main living space centered around a floor-to-ceiling stone fireplace and featuring 12-foot vaulted ceilings for a spacious and airy ambiance throughout
- Large kitchen equipped with full butler's pantry and top-tier Wolf® and Sub Zero® appliances
- Dining area seamlessly integrates with living room and kitchen making it ideal for hosting family gatherings
- Five sizable bedrooms with dedicated bathrooms providing comfort and privacy for your family and friends
- True primary suite with 10-foot ceilings, five-piece bathroom including free standing tub and two expansive walk-in closets
- Walk-out lower level rec room with 9-foot ceilings and an inviting fireplace offering ample space for relaxation and entertainment
- Large mudroom and laundry room creating a seamless transition from outdoor adventure to indoor comfort
- Roomy three car garage with in-floor radiant heat
- Use of premium materials and high-end finishes plus an opportunity to choose from a vast selection of upgrades and designer finishes



970.286.0202

SUMMITSKYRANCH.COM/REAL-ESTATE

April 15, 2024. All elements, designs, plans, renderings, prices, and any other information presented hereon are for informational purposes only, are not guaranteed, and are subject to change or elimination without prior notice. Maps, floor plans, and models are not to scale, and all measurements are approximate. Views are not guaranteed. Verify all items before purchasing. The project has not been registered under various state laws, and this material is not addressed to residents in any states which require registration.